



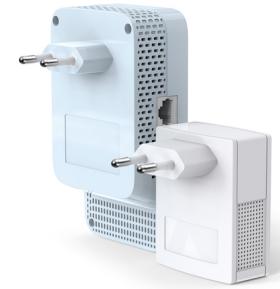
## TP-Link TL-WPA7517 KIT Adaptateur réseau CPL 1000 Mbit/s Ethernet/LAN Wifi Blanc

Marque : TP-Link

Code produit: TL-WPA7517 KIT

Nom du produit : TL-WPA7517 KIT

TP-Link TL-WPA7517 KIT. Débit de transfert des données maximum: 1000 Mbit/s, Standards réseau: IEEE 1901, IEEE 802.11a, IEEE 802.11ac, IEEE 802.11b, IEEE 802.11g, IEEE 802.11n, IEEE 802.3, IEEE..., Prise mâle: Type E. Consommation électrique typique: 6,5 W. Couleur du produit: Blanc, Type d'antenne: Interne, Voyants: LAN, PLC, Énergie, Wi-Fi. Prise en charge du système d'exploitation Windows: Windows 10, Windows 7, Windows 8, Windows 8.1. Largeur: 69,5 mm, Profondeur: 35 mm, Hauteur: 124,1 mm



représentation / réalisation		Design	
Débit de transfert des données maximum *	1000 Mbit/s	Type d'antenne	Interne
Ethernet/LAN *	✓	Voyants	LAN, PLC, Énergie, Wi-Fi
Type d'interface LAN Ethernet	Gigabit Ethernet	Couleur du produit *	Blanc
LAN Ethernet : taux de transfert des données	10,100,1000 Mbit/s	Certification	CE, RoHS
Nombre de port ethernet LAN (RJ-45)	2	<b>Configuration minimale du système</b>	
Wifi *	✓	Prise en charge du système d'exploitation Windows	Windows 10, Windows 7, Windows 8, Windows 8.1
Norme Wi-Fi	Wi-Fi 5 (802.11ac)	Prise en charge du système d'exploitation Linux	✓
Standards wifi	802.11a, 802.11b, 802.11g, Wi-Fi 4 (802.11n), Wi-Fi 5 (802.11ac)	Compatibilité Mac	✓
Bande Wi-Fi	Bi-bande (2,4 GHz / 5 GHz)	Prise en charge du système d'exploitation Mac	✓
Vitesse de transfert des données WLAN	300,433 Mbit/s	<b>Conditions environnementales</b>	
Standards réseau *	IEEE 1901, IEEE 802.11a, IEEE 802.11ac, IEEE 802.11b, IEEE 802.11g, IEEE 802.11n, IEEE 802.3, IEEE 802.3u	Température d'opération	0 - 40 °C
Prise mâle *	Type E	Humidité relative de fonctionnement (H-H)	10 - 90%
Prise de courant intégrée *	✗	<b>Poids et dimensions</b>	
Ligne à haute tension standard	HomePlug AV2	Largeur	69,5 mm
Modulation	OFDM	Profondeur	35 mm
Algorithme de sécurité soutenu	WEP, WPA-PSK, WPA2-PSK	Hauteur	124,1 mm
Distance de fonctionnement maximum	300 m	Largeur du colis	230 mm
Bouton de cryptage	✓	Profondeur du colis	190 mm
Plug and Play	✓	Hauteur du colis	100 mm
<b>Puissance</b>		Poids du paquet	560 g
Consommation électrique typique	6,5 W	<b>Contenu de l'emballage</b>	
		Guide d'installation rapide	✓
		Câbles inclus	LAN (RJ-45)
		<b>Données logistiques</b>	
		Code du système harmonisé	85171800



6935364072230



6935364052584



0845973099688



845973099688

Disclaimer. The information published here (the "Information") is based on sources that can be considered reliable, typically the manufacturer, but this Information is provided "AS IS" and without guarantee of correctness or completeness. The Information is only indicative and can be changed at any time without notification. No rights can be based on the Information. Suppliers or aggregators of this Information do not accept any liability with regard to the content of (web)pages and other documents, including its Information. The publisher of the Information can not be held liable for the content of 3rd party websites that are linking this Information or are linked to from this Information. You as the User of the Information are solely responsible for the choice and usage of this Information. You are not entitled to transfer, copy or otherwise multiply or distribute the Information. You are obliged to follow the directions of the copyright owner(s) with regard to the use of the Information. Exclusively Dutch law is applicable. With regard to price and stock data on the site, the publisher followed a number of starting points, which are not necessarily relevant for your private or business circumstances. Therefore, the price and stock data are only indicative and are subject to changes. You are personally responsible for the way you use and apply this information. As a user of the Information or sites or documents in which this Information is included, you will adhere to standard fair use including avoidance of spamming, ripping, intellectual-property violations, privacy violations, and any other illegal activity.