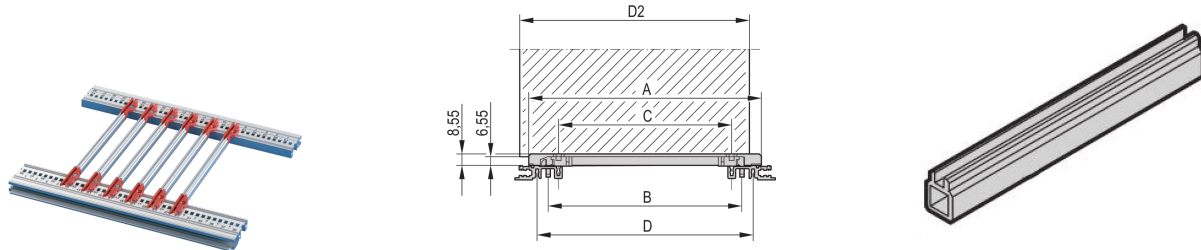


34560-894 GUIDE RAIL MULTI PIECE, MID-PIECE, ALUMINUM EXTRUSION, 340 MM, 2 MM GROOVE WIDTH, 10 PIECES



KEY FEATURES

Middle profile for mounting guide rails for 2-mm groove width

2 plastic end pieces are required; these are pushed on to both ends of the middle profile

Guide rails can be clipped into horizontal rails (Al extrusion) or into 1.5-mm-thick plates

Storage temperature: from -40-°C-...-130-°C

PRODUCT ATTRIBUTES

Product Type: Guide Rail

Type: Middle Section

Works With: Subracks; Cases; Chassis

Board Depth: 340 mm

Groove Width: 2

Material: Aluminum

Color: Silver

ADDITIONAL PRODUCT DETAILS

Guide rail mid-piece for individual multi-piece guide rails out of plastic or Aluminum extrusion. Suitable for Standard, Accessory, 4.4" PCB types and end pieces with coding.

Delivery may be in Standard Pack Quantity (SPQ). Pricing is per individual item.



North America

All locations
+1.763.422.2661
Chat with us:
schroff.nvent.com

Europe

Straubenhardt, Germany
+49.7082.794.0
Betschdorf, France
+33.3.88.90.64.90
Warsaw, Poland
+48.22.209.98.35
Assago, Italy
+39.02.932.7141
Chat with us:
schroff.nvent.com

Asia

Shanghai, China
+86.21.2412.6943
Qingdao, China
+86.532.8771.6101
Singapore
+65.6768.5800
Shin-Yokohama, Japan
+81.45.476.0271
Chat with us:
schroff.nvent.com

Middle East & India

Dubai, United Arab Emirates
+971.4.378.1700
Bangalore, India
+91.80.6715.2001
Istanbul, Turkey
+90.216.250.7374
Chat with us:
schroff.nvent.com



Our powerful portfolio of brands:
nVent.com **CADDY ERICO HOFFMAN RAYCHEM SCHROFF TRACER**